

# COLUMBINE PLACE



# COLUMBINE PLACE



**START RATE \$23/SF  
FULL SERVICE**

## SUITE HIGHLIGHTS

- Floorplate size of approximately 12,565 SF with Class A finishes and intensive office build out
- Perimeter offices and conference rooms with kitchen/breakroom, storage/IT and reception
- Excellent views of mountains, State Capitol, Civic Center Park and Downtown Denver throughout suites
- Great space for companies such as oil and gas, energy and natural resources, law, and accounting

## AREA AMENITIES

- Located on the 16th Street Pedestrian Mall with abundant restaurants and shops
- Great access to public transportation; on the 16th Street Free Mall Ride route, one block from Denver Civic Center Station and four blocks from 16th & California Lightrail Station
- Convenient to Denver's municipal buildings, courthouse and the Colorado State Capitol

**AVAILABLE:** 2,044 SF  
**BUILDING SIZE:** 154,304 SF  
**FLOORPLATE:** 12,565 SF  
**TYPE:** Class B Office Building  
**YEAR BUILT:** 1982, Renovated 2009  
**STORIES:** 17  
**ELEVATOR:** 4 Passenger Cabs  
**PARKING:** 1:1,480 SF On-Site  
104 Covered Spaces

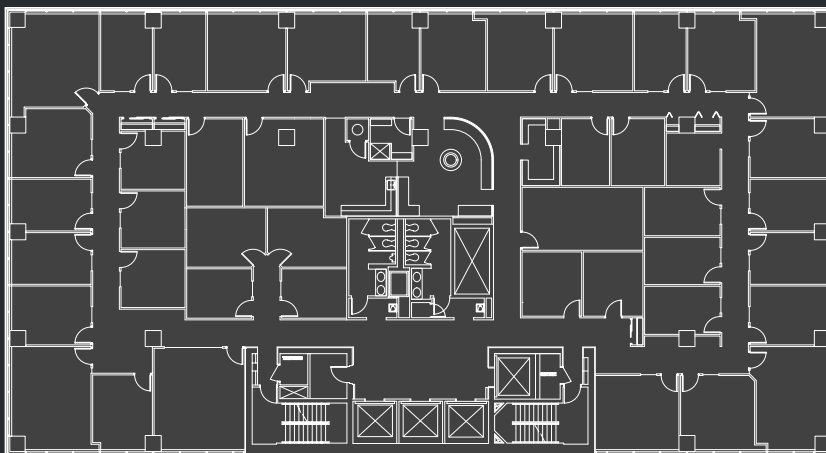
**BUILDING AMENITIES:** Ground Floor Retail  
Security Desk  
Bulk Storage  
Loading Dock  
On-Site Management

**SUITE 860  
2,044 SF**

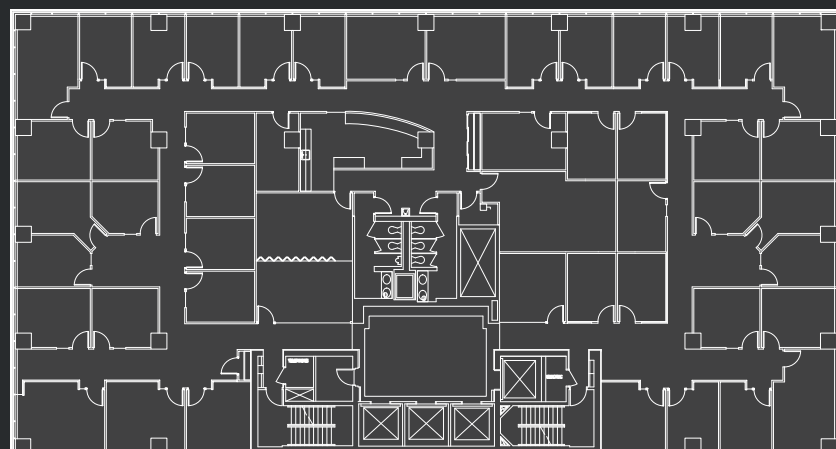
# 216 16TH STREET, DENVER, CO 80202



Typical Floorplate



Typical Floorplate





**COLUMBINE PLACE**

**DOWNTOWN DENVER 337 RESTAURANTS & BARS**  
**25 HOTELS 248 SHOPPING AREAS**

- LEGEND**
- 16th Street Mall Shuttle (free)
  - Light Rail

Columbine Place's central location and accessibility are exceptional. Situated at the head of the 16th Street Mall, Columbine Place provides easy access in and out of the downtown area via Broadway, Lincoln, Colfax Avenue and Speer Boulevard. The main RTD Transit terminal is one half block away and the 16th Street Mall Shuttle buses provide free convenient transportation across the downtown core.

[www.columbineplace.com](http://www.columbineplace.com)

**NAI Shames Makovsky**  
 Commercial Real Estate Services, Worldwide.

FOR MORE INFORMATION CALL (303) 534-5005 | [www.naishamesmakovsky.com](http://www.naishamesmakovsky.com)

Trent Rice | (303) 565-3033 | [trice@shamesmakovsky.com](mailto:trice@shamesmakovsky.com) | Brian Bair | (303) 565-3019 | [bbair@shamesmakovsky.com](mailto:bbair@shamesmakovsky.com)